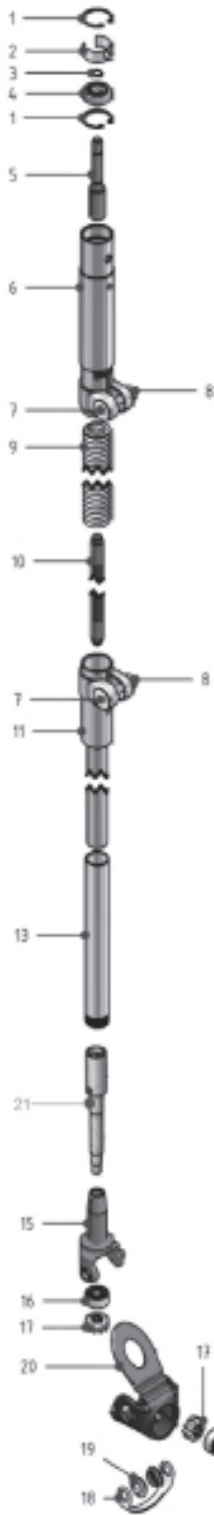


Evo Solid Downtube Spare Parts (Zinc Spring)



POS	PART NO.	EVO SOLID DOWNTUBE SPARES (ZINC SPRING)
1	721-404	CIRCLIP D26 X 1.2 DIN 472
2	721-768	CLIP DIN 10
3	722-219	E-CLIP FOR SHAFT DIN 6799
4	722-220	BEARING 60000-2Z
5	721-405	D/T DRIVE COUPLING
6	722-751	PLANT CONNECTING SLEEVE
7	721-413	M8 x 40 CUP HEAD BOLT Z/P
8	721-743	NUT M8
9	721-407	TUBE SPRING
10	722-950	LONG CORE ASSEMBLY
10	722-955	LONG CORE THREADED NO FITTINGS
11	722-951	LONG TUBE ASSEMBLY - 1130MM
13	721-139	FERRULE DT 22X180MM
15	721-146	OUTER BACK HALF JOINT
16	721-126	BEARING 30/8
17	720-007	COGS EVO DOWNTUBE
18	721-121	JOINT SPRING
19	721-124	BACKJOINT CAP
20	721-120	BACK JOINT COVER
21	721-411	JOINT SPINDLE
22	722-952	SHORT TUBE ASSEMBLY - 410MM
23	721-413	M8 x 40 CUP HEAD BOLT Z/P
24	721-412	LOCKNUTM8 X 1
25	722-953	SHORT CORE ASSEMBLY - WORM
	722-890	EVO DOWNTUBE ADAPTOR KIT COMPLETE

**DIAGRAM:
EVO SOLID DOWNTUBE
(ZINC SPRING)**