



Table of contents

1	Safety	3
1.1	Personal	3
1.2	Symbols and warning notes	3
1.3	Stipulated usage	4
1.4	Personal Protective Equipment (PPE)	4
1.5	Power supply	5
1.6	Animals	6
1.7	Battery	6
1.8	Shearing blades	7
1.9	Children	8
2	Generalities	8
2.1	Guarantee conditions	8
2.2	Customer service	8
2.3	Limitation of liability	8
3	Technical data	9
3.1	Shearing machine	9
3.2	Charger and power supply unit	9
4	Assembly and function	9
4.1	Overview	9
4.2	Functional description	9
5	Transport, packaging and storage	10
5.1	Scope of delivery	10
5.2	Packaging	10
5.3	Storage	10
6	Operation	10
6.1	Requirements at the place of use	10
6.2	Charge battery	11
6.2.1	Setting up the charging station	11
6.2.2	Meaning of the LEDs	11
6.2.3	Charge battery	11
6.3	Adjusting the shearing pressure	12
6.4	Switching the shearing machine on and off	13
6.5	Using the shearing machine	13
6.6	Replacing the shearing blades	13
6.7	Lubrication	15
6.8	Cleaning	15
7	Troubleshooting	16
7.1	Safety instructions	16
7.2	Causes of malfunctions and their rectification	16
8	Spare parts	18
9	Disposal	19



IMPORTANT SAFETY INSTRUCTIONS



NOTE!

When using an electrical device, you must always observe basic precautionary measures as described below:

Read all instructions before using the device.

1 Safety

Failure to observe the instructions and safety regulations mentioned in this manual can result in serious injury or damages to people, equipment and animals.

1.1 Personal

- The operator must be experienced in handling the animals to be sheared.
- Children are not permitted to operate the equipment.

Operation of the shearing machine is only permitted by personal expected to do their work reliably. Persons, whose reactivity is affected by drugs, alcohol or pharmaceuticals, are not permitted to operate the equipment.

1.2 Symbols and warning notes

Various symbols are used in the operating instructions. These symbols indicate possible hazards or bring to the user's attention such technical information that, if not complied with, may lead to personal injury and material damage or to uneconomic operation.

Hazard symbols



WARNING/DANGER!

Denotes a possibly hazardous situation. Serious injury and even death can result if such situations are not avoided.



CAUTION!

Denotes a possibly hazardous situation. Light or slight injury can result if such situations are not avoided.

Information symbols



NOTE!

A note which, if not complied with, can lead to operational stoppages or damage.

1.3 Stipulated usage

The device is designed and constructed exclusively for the intended use described here.

The device is designed exclusively for shearing sheep, goats and llamas, alpacas and other camelidae. The device is intended for commercial use.

The compliance of all indications in this manual is part of the intended use.

Other uses are expressly prohibited.

The device may only be operated with the power supply unit provided.



WARNING!

Expressly prohibited are:

- Using the machine on persons.
- Shearing other animals, in particular dangerous animals such as beasts of prey.

1.4 Personal Protective Equipment (PPE)



CAUTION!

Danger of injury through incorrect or missing protective equipment! Personal protective equipment is required when working, in order to minimise the possibility of endangering health.

- Always wear the protective equipment required for the current task when performing work.



Antislip shoes. For protection against slipping on slippery underground.



Protective goggles to protect eyes from flying parts.



Close-fitting protective clothing with low resistance to tearing, with tight sleeves and no protruding parts. This is primarily to prevent injury if they become caught between moving parts of the machine.

Do not wear rings, chains or other jewellery.



Wear work gloves to protect against injury.



The acoustic emission while operating the device is typically 66 dB(A). We recommend that you always wear ear protection when working with the device.

1.5 Power supply



DANGER!

In order to reduce the risk of electric shock:

- ▶ Do not reach for an appliance that has fallen into water. Pull out the plug from the socket immediately.
- ▶ Do not use the device while bathing or showering.
- ▶ Do not place or store the device in such a way that it can fall or be pulled into a tub or sink. Do not place the device in water or other liquids and do not allow it to fall in.
- ▶ Except when charging, always unplug this device from the electrical outlet immediately after using.
- ▶ Unplug the device from the mains before cleaning it.



WARNING!

To reduce the risk of burns, fire, electric shock, or injury to persons:

- ▶ A device must never be left unattended when it is plugged in.
- ▶ This device is not intended to be used by persons (including children) with reduced physical, sensory or mental capabilities, or lack of experience and knowledge, unless they are supervised by a person responsible for their safety or have been given instructions by that person on how to use the device. Children should be supervised to ensure that they do not play with the equipment.
- ▶ Only use the device for the purpose described in these instructions. Do not use attachments not specified by the manufacturer.
- ▶ Never use the device if the cable or outlet are damaged or if it does not work properly after falling, sustaining damage or landing in water. Take the device to a service centre for inspection and repair.
- ▶ Keep the cable away from heated surfaces.
- ▶ Keep the air openings free of lint, hair, and similar.
- ▶ Do not allow objects to fall into an opening and do not insert any objects into it.
- ▶ Do not use the device outdoors and do not operate it while aerosol products (sprays) are being used.
- ▶ Do not use this device if the comb is damaged or broken, as this can lead to injuries.
- ▶ First insert the plug into the device before plugging it into the outlet. In order to disconnect the device, switch all operating elements to the OFF position (e.g. "0") and then remove the plug from the socket.
- ▶ Plug the cable of the charging station directly into the socket, do not use an extension cable.

- ▶ Disconnect the mains plug of the charging station from the socket before plugging in or unplugging the device.



WARNING!

Keep the device dry.

1.6 Animals

The appliance is intended for trimming purposes only.



WARNING!

The noise of the shearing machine can trouble animals. A kick, an attack or the weight of the animal can cause serious injuries. Therefore:

- ▶ Just persons being experienced in handling with animals are allowed to shear the animals.
- ▶ Calm the animal and restrain it sufficiently before starting work.
- ▶ Proceed with caution during all work.
- ▶ Do not allow unauthorised persons access to the shearing site.
- ▶ Do not charge, install or leave the device in places where it is expected to:
 - be exposed to damage by an animal, or
 - Be exposed to weather conditions.

1.7 Battery



WARNING!

Danger of injury from incorrect handling of battery!

The rechargeable battery must be handled with particular care. Therefore:

- ▶ Only use original rechargeable batteries.
- ▶ Do not throw the battery into fire or expose it to high temperatures. There is a risk of explosion.
- ▶ Only use undamaged batteries.
- ▶ Never expose the battery and charging station to direct sunlight or moisture.
- ▶ Never short-circuit the battery. Because of overheating the battery can blow out.
- ▶ Never open the battery. In case of incorrect use, escaping liquid can cause skin irritation. Avoid any contact with the liquid of the battery. In case of contact wash up the liquid with a lot of water. If the liquid enters in the eyes, wash out immediately for 10 minutes and call on a doctor without delay.

- ▶ Only use the charging station supplied with the device to charge the battery.

- ▶ **No shipping with the battery inserted**

Remove the battery from the machine before transporting it. Batteries may only be shipped with the prescribed labelling in accordance with national and international regulations. The regulations for transporting defective batteries must be strictly adhered to.



CAUTION!

Reduced lifetime of battery if handled incorrectly!

The efficiency of the battery may be reduced by incorrect handling. Therefore:

- ▶ Only use the original battery charging station. Other charging stations could damage the battery beyond repair.
- ▶ Disconnect the charging station from the power supply if it will not be used for a longer period of time.
- ▶ Remove the battery and machine from the charging station when the charging station is not connected to the mains.
- ▶ Never insert other objects into an opening in the charging station or into the battery holder on the device.
- ▶ Replace a battery that can no longer be charged. This will damage the charging station.
- ▶ Exhausted batteries are to be removed from the appliance and safely disposed of.
- ▶ If the appliance is to be stored unused for a long period, the batteries are removed.

1.8 Shearing blades

The blades may become hot after prolonged use.



WARNING!

Moving blades and sharp edges of the shearing blades can cause injuries on the skin. Therefore:

- ▶ Proceed with caution during all work.
- ▶ Avoid any contact with the moving shearing blade.

1.9 Children



WARNING!

Never let the equipment unsupervised and use it very carefully when children or persons who cannot judge the dangers are nearby.

Children are not permitted to operate the equipment. Children must not be allowed to play with the device.



KEEP THESE INSTRUCTIONS IN A SAFE PLACE!

2 Generalities

This manual facilitates a safe and efficient machine handling.

Basic requirements for a safe operation are the adherence of all the information regarding safety and operation in this manual.

Keep this manual permanently. If you hand on the equipment to other persons, provide them with this manual.

2.1 Guarantee conditions

The guarantee conditions are included in the general terms and conditions of the manufacturer.

2.2 Customer service

For technical information, our customer service and our authorised service centres are at your disposal.

Furthermore, our staff is interested in new information and experience resulting from the operation which could be useful for the improvement of our products.

2.3 Limitation of liability

All information and instructions in this manual have been compiled taking into account the applicable standards and regulations, the latest state of the art and our many years of knowledge and experience.

The manufacturer accepts no liability for damage caused by:

- Non-observance of the instruction manual
- Improper use of the machine
- Assignment of not instructed personal
- Technical modifications
- Use of not approved spare parts

The actual scope of delivery can differ from specially designed models, from additional ordering options or due to the latest state of the art from the here described annotations and illustrations.

3 Technical data

3.1 Shearing machine

Handle	Ø 54 mm
Length	330 mm
Weight with battery	1.4 kg
Rotary speeds	see specifications plate on the device
Noise emission	66 dB(A) (EN 60335-2-8)
Vibration a_{hv}	13.28 m/s ² (EN 60335-2-8)

3.2 Charger and power supply unit

Voltage	see specifications plate on the device
Max. current consumption	
Frequency	

4 Assembly and function

4.1 Overview



- 1 Shearing blades
- 2 Air outlet opening
- 3 Lubrication opening
- 4 Shearing head
- 5 Clipping pressure adjustment
- 6 Motor unit
- 7 ON/OFF switch
- 8 Air filter
- 9 Battery

Fig. 1

4.2 Functional description



Fig. 2

The shearing machine is used to shear sheep, goats and llamas, alpacas and other camelidae.

Two comb-shaped blades are the cutting tool.

- The comb plate (1) closest to the skin of the animal is fixed and attached to the housing.
- The top blade (2) is agitated crossways that one. The upper blade is set in motion with the help of two chicken feet.
- The shearing pressure between the blades is set using the adjustment knob (3).

5 Transport, packaging and storage

5.1 Scope of delivery

Shearing machine	1 pce
Shearing blades	1 pair
Special screwdriver	1 pce
Special lubricating oil	1 bottle
Cleaning brush	1 pce
Case for transport and storage	1 pce
Instruction Manual	1 pce
Charging station with plug	1 pce
Battery (equipment oriented)	1-2 pcs.



NOTE!

- Check the delivery for completeness and visible damage. Please report incomplete package contents or any apparent damage immediately to your supplier/dealer.

5.2 Packaging

Only environmentally friendly materials were used for the packaging.



The return of the packaging saves raw materials and reduces the volume of waste.

- Dispose of packaging materials that are no longer required in accordance with local regulations.

5.3 Storage

Store shearing machine and accessories on the following conditions:

- Do not store outdoor.
- Store dry and dust-free.
- Protect against solar irradiation.
- Avoid mechanical shocks.
- Storage temperature: 0 until 40°C.
- Relative humidity: max. 90 %.

6 Operation

6.1 Requirements at the place of use

- Observe all technical data according to the operating conditions (3 Technical data).
- Power outlets in the outer area must be equipped with a residual current circuit breaker (FI).
- The workplace must dispose of sufficient illumination and ventilation.
- The electrical socket must be easily accessible so that the device can be quickly disconnected from the mains.
- The location of installation must be out of reach of children.
- The charger power cord must not be taut or kinked.

6.2 Charge battery

6.2.1 Setting up the charging station



Fig. 3

1. Place the charging station (3) on a firm, level, dry and clean surface.
2. Connect cable (1) to the charging station.
3. Insert the power plug of the cable (1) into the socket. The green continuous light of the left LED (2) indicates that the plug-in power supply unit is correctly connected to the socket and the charging station is receiving power. The charging station is ready for use.

- When the battery is fully charged, both LEDs (2) light up green.
- After about 35 minutes the battery is about 2/3 charged at room temperature.

6.2.2 Meaning of the LEDs

left LED	right LED	Fan	Meaning
green	off	off	Charging station ready, battery not yet inserted
green	red	on	Battery inserted, battery is charging
green	green	on	Battery fully charged (100%), trickle charge
green	off	off	Battery inserted, charging not possible (Over-temperature of charging station or battery, battery defective, battery blocked, etc.)

6.2.3 Charge battery

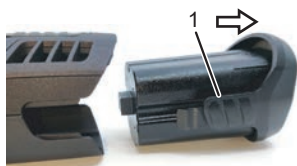


Fig. 4

1. Press the battery lock (1) on both sides and remove the battery from the machine
2. Check the battery contacts for foreign objects and dirt.



Fig. 5

3. Insert the battery from above without forcing it into the charging tray provided in the charging station. The battery will now start charging. As soon as the battery is fully charged, the charging station switches to 'trickle charge', see section 6.2.2.

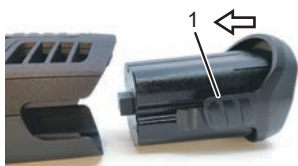


Fig. 6



NOTE!

Fast charging (CC charging) takes about 35 minutes for an empty battery. The battery is then approximately 2/3 charged and fully operational. With two batteries, continuous operation is possible.

4. Insert the charged battery into the shearing machine until the battery lock (1) is engaged on both sides.

Charge level indicator on the battery

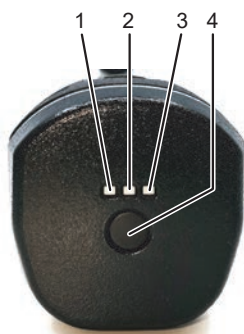


Fig. 7

- Press button (4) to display the battery charge level.

LED (1)	LED (2)	LED (3)	Meaning
green	green	green	Display without pressing the button (4): Battery is charging
flashing	off	off	Battery flat
green	flashing	off	Charge level in the middle range
green	green	flashing	Battery almost full
green	green	green	Battery 100% full

6.3 Adjusting the shearing pressure

Set the shearing pressure as follows before starting shearing:



Fig. 8

1. With the machine switched off, check that the driving taper pins of the pressure forks engage exactly in the positioning holes of the upper blade.
2. Turn the adjusting knob in the direction of the arrow until the first noticeable resistance is felt.
3. Turn the adjustment knob another quarter turn in the direction of the arrow.
4. If the shearing result decreases, increase the shearing pressure by turning the adjusting knob a further quarter turn in the direction of the arrow.

If this does not produce the desired result, the shearing blades must be replaced or sharpened.



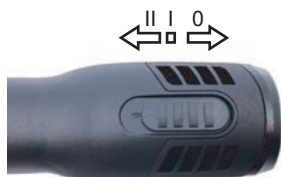
CAUTION!

The upper blade of the shearing head is only held by the tapered pins of the chicken feet. If the shearing pressure adjustment head is released too much, the upper blade can fly off and result in injuries.

**NOTE!**

If the shearing pressure is too low, hair can gather between the shearing blades. This results in a poor shearing quality.

- ▶ In this case, clean the shearing blades with a brush.

6.4 Switching the shearing machine on and off**Turning on the shearing machine**

- ▶ Slide the on/off switch to position I or position II.

Turning off the shearing machine

- ▶ Slide the on/off switch to position 0.

Fig. 9

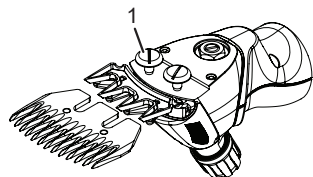
6.5 Using the shearing machine

1. Make sure the battery is charged.
2. Approach the animal from the front.
3. Fixate and calm the animal to be sheared.
4. Switch on the shearing machine already in the field of vision of the animal.
5. Select the desired speed (level I or II).
6. During shearing, look at the behaviour of the animal.
7. After shearing, switch off the shearing machine.

6.6 Replacing the shearing blades

1. Turn off the shearing machine. To do this, slide the on/off switch to position 0.
2. Remove the battery from the shearing machine.
3. Turn the adjustment knob in the direction of the arrow until the resistance decreases.

Fig. 10



4. Place the shearing machine on a level surface with the comb plate screws facing upwards.
5. Loosen comb plate screws (1).
6. Remove the comb plate from the shearing head.

Fig. 11

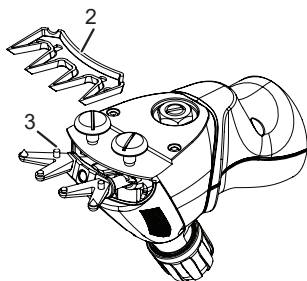


Fig. 12

7. Remove upper blade (2).
8. Place the new upper blade in the drive taper pins (3) of the pressure forks.



Fig. 13

9. Apply a few drops of oil to the ground surfaces of the upper blade.



NOTE!

- ▶ When fitting the new or reground shearing blades, ensure that the blades are correctly positioned in relation to each other.
- ▶ The tapered pins of the chicken feet must engage exactly in the positioning holes of the upper blade.

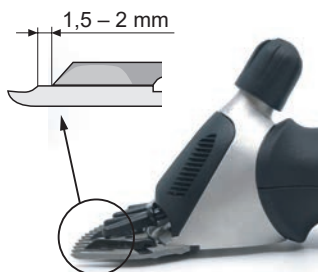


Fig. 14

10. Install new comb plate. To do this, align the comb plate so that the ground surface of the comb plate protrudes approx. 1.5 - 2 mm beyond the tips of the upper blade.
11. Tighten the comb plate screws.



NOTE!

- ▶ Only work with sharp shearing blades, replace blunt or defective blades with missing teeth.
- ▶ The correct resharpening of shearing blades is only to be done by special machines or by a specialist. In this case, please contact the service centre.

6.7 Lubrication



Fig. 15

To ensure a well-shorn animal and to increase the life of the shearing machine including the shearing head, it is necessary to apply a thin coat of oil between the upper blade and comb plate. All other moving parts of the shearing head must also be lubricated.

- ▶ Drip oil onto the shearing blades and the lubrication opening on the shearing head.



CAUTION!

Insufficient oiling of the shearing head will lead to warming and will shorten the life of the shearing machine and its blades. Therefore:

- ▶ Oil the shearing blades sufficiently during shearing, at least every 15 minutes, so that they do not run dry.
- ▶ Only use the special oil supplied or a paraffin oil of the ISO VG 15 specification.



NOTE!

The provided oil is non-toxic and produces no irritation on contact with the skin or the mucous membranes. This paraffin oil degrades to some 20% after 21 days (CEL-L-33-T-82).

- ▶ Oil the blades before, during and after each use.
- ▶ Oil the blades at the latest when they leave streaks or slow down.
- ▶ Place a few drops of oil ahead and laterally on the shearing blades (see Fig. 15).
- ▶ Wipe off the excessive oil with a smooth, dry cloth.
- ▶ Lubricating sprays do not contain enough oil for good lubrication, but are suitable for cooling the shearing blades.
- ▶ Replace damaged blades immediately to prevent injuries.

6.8 Cleaning



CAUTION!

Improper cleaning

Risk of damaging the shearing machine!

- ▶ Only clean the shearing machine with a dry cloth and the brush provided.
- ▶ Only clean the air filter with a dry brush or paintbrush.
- ▶ Never use compressed air.

Housing of the shearing machine

- ▶ Clean the housing of the shearing machine with a dry cloth.

Shearing blade and shearing head

- ▶ Clean the shearing blades and shearing head with the brush supplied.
- ▶ Lubricate the shearing blades as described in chapter 6.7.

Clean air filter



1. Switch off the machine and remove the battery (1) from the shearing machine.
2. Remove the air filter (2) from the shearing machine.
3. Clean the air filter (2) with a dry brush. Ensure that no foreign objects get into the shearing machine during cleaning.
4. Insert the air filter back into the shearing machine.
5. If you want to continue shearing, push the battery into the shearing machine. Otherwise, store the shearing machine and battery separately in the case.

Fig. 16



CAUTION!

Risk of damaging the shearing machine!

Operating the shearing machine without the air filter can damage the shearing machine.

- Only operate the shearing machine with the air filter correctly fitted.

7 Troubleshooting

7.1 Safety instructions



DANGER!

Danger of fatal electric shock!

Fatal electric shocks can result from contact with electrically live conductors or components!

- Before starting troubleshooting, switch off the machine and remove the battery.
- Repairs to electrical devices must only be carried out by the factory service department or specialists who have been trained by the manufacturer.
- During the warranty period, the device may only be opened by personnel authorised by the manufacturer. Otherwise the warranty claim will be void.

7.2 Causes of malfunctions and their rectification

Malfunction	Cause	Rectification
The upper blade does not move across the full bearing surface.	Retaining spring broken.	Notify customer service
	Eccentric shaft and/or ball or swivel head worn (insufficient lubrication)	
	Bearings heavily worn	
Top blade does not move	Eccentric shaft is broken or bent	Notify customer service
	Ball is missing.	
Shearing pressure adjustment knob jammed	Thread dirty or rusty	Notify customer service
	Locking ring jammed	

Malfunction	Cause	Rectification
Shearing pressure adjustment knob loosens by itself	Retainer missing	Notify customer service
	Threaded insert is loose.	
Not enough pressure can be applied to the upper blade.	Retaining spring broken.	Notify customer service
	Sliding sleeve is missing	
	Bolt bearing worn	
	Swivel head worn	
	Chicken feet worn	
Chicken feet fall out.	Securing cams on the retaining spring are broken	Notify customer service
Motor does not run or stops immediately	Shearing pressure too strong	Reduce shearing pressure
	Battery flat	Charge battery
	Contacts dirty	Switch off the shearing machine, clean the shearing machine and battery contacts
	Defective battery	Replace battery
	Smell of burning from the motor housing. Motor burned out.	Notify customer service
	Shearing head blocked	Remove jamming
	Motor and/or electronics defective	Notify customer service
Motor runs very slowly	Shearing blades not sufficiently oiled	Oil shearing blades
	Shearing pressure too strong	Reduce shearing pressure
	Battery almost empty	Charge battery
	Motor and/or electronics defective	Notify customer service
Motor unit becomes hot.	Shearing pressure too strong	Reduce shearing pressure
Battery charge time too short and/or blades become hot	Shearing blades not sufficiently oiled	Oil shearing blades
	Empty, not fully charged or defective batteries used	Only use intact, fully charged original batteries
No speed difference between level I and level II	Motor and/or electronics defective	Notify customer service
Left LED on charger is not lit	Charging station not connected to the power supply	Connect the charging station to the power supply
	Electronics or power supply unit defective	Notify customer service
Normal charging does not start when the discharged battery is inserted	Contacts of battery and/or charging station dirty	Clean contacts
	Defective battery	Replace battery
	Electronics defective	Notify customer service

8 Spare parts

See illustration Spare parts at the end of these operating instructions.



WARNING!

Faulty spare parts may cause damages, malfunctions or total loss and may reduce security. Therefore:

- ▶ Only use original spare parts from the manufacturer. Purchase the spare parts at the official distributor or directly at the manufacturer.
- ▶ If using no original spare parts all warranty and service claims are expiring.
- ▶ During the warranty period, the device may only be opened by personnel authorised by the manufacturer. Otherwise the warranty claim will be void.

Pos. No.	Description	Quantity	Pos. No.	Description	Quantity
1	Sheep shearing head Xcell complete	1	37	KA 30x6 PT screw	14
2	Sheep adjusting head black	1	38	Signal Cable XplorerPro	1
3	Sheep shearing head cover	1	39	Pan head screw Torx Kaffok M3x6	8
4	Retaining spring	1	40	Motor bracket	1
5	Swivelling fork	1	41	Clutch Xcell complete	1
6	Fork bracket 3'	1	42	Motor HACH35-57-260 Xcell	1
7	Chicken feet 3' right	1	43	Impeller	1
8	Chicken feet 3' left	1	44	PCB-Main shearing machine Xcell	1
9	Countersunk screw M4x8	2	45	Li-Ion battery Xcell 5.0 Ah Heiniger	1
10	Ball	1	46	Cable holder Xcell	1
11	Eccentric shaft Xcell	1	47	Housing shell bottom Xcell black	1
12	Ball bearing 608-2RS	1	52	KA 30x16 PT screw	14
13	Comb plate screw, sheep	2	70	Housing charging station Xcell Heiniger	1
14	Locknut	1	71	Housing base charging station Xcell	1
15	Centre post	1	72	PCB charging station Xcell	1
16	Sheep shearing head housing Xcell	1	73	Power supply charging station	1
17	Ball bearing 608-2Z	1	74	Fan charging station Xcell	1
20	Threaded insert	1	75	Fan guard	1
21	Circlip	1	76	Screws	4
22	Sliding sleeve	1	77	Ferrite holder	1
30	Housing shell top Heiniger complete	1	78	Cable power supply	1
31	Heiniger top housing shell	1	79	Light guide Xcell	2

Pos. No.	Description	Quantity	Pos. No.	Description	Quantity
32	Switch lever	1	83	Xcell cable with EU plug with AU plug with GB plug with US plug with plug ARG with BR plug	1
33	Air filter Xcell	1			
34	Switch latching with contact	1			
35	Switch contact	1			
36	PCB switch machine Xcell	1			

9 Disposal



CAUTION!

Environmental damages when disposing incorrectly!

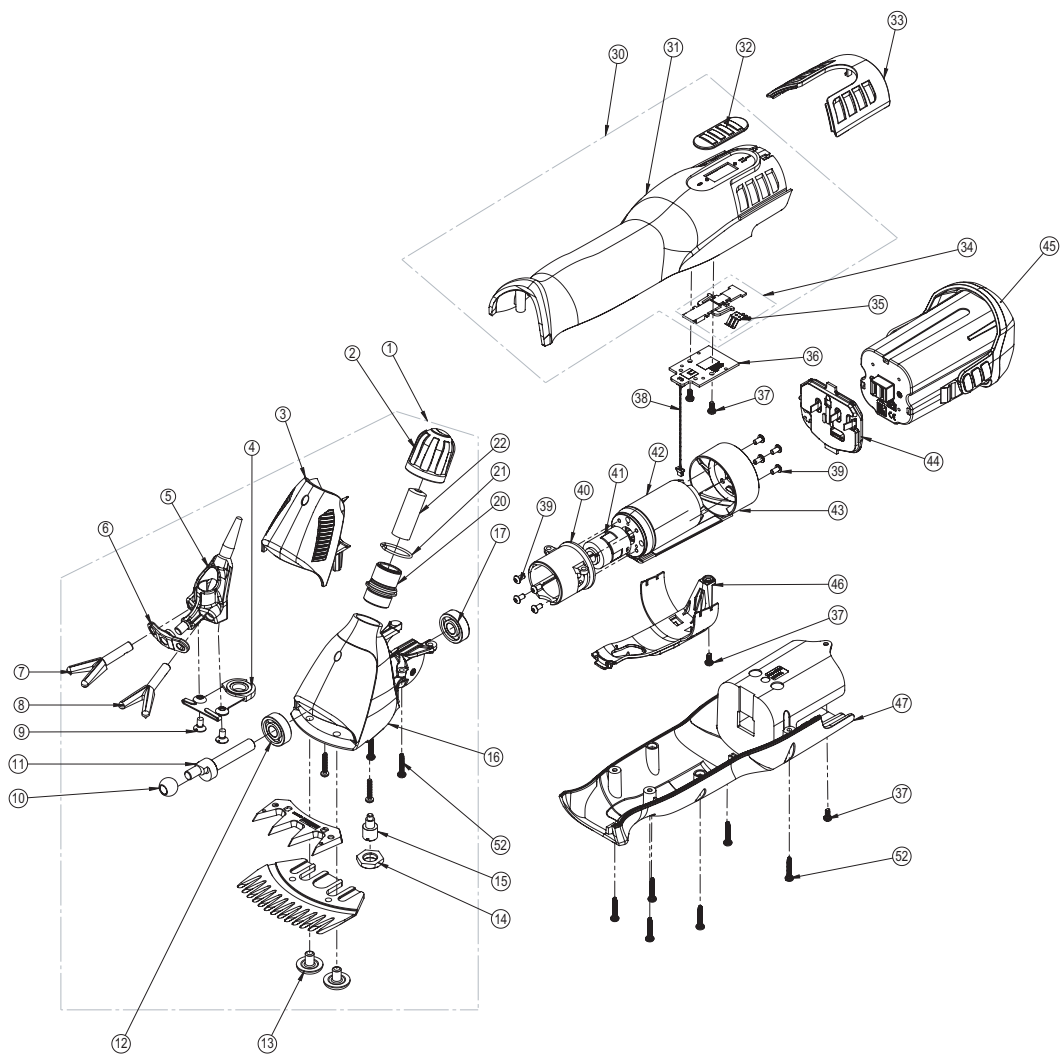
- Electronic scrap, batteries, lubricants and other indirect materials are subject to hazardous waste treatment and may only be disposed of by approved specialist companies!

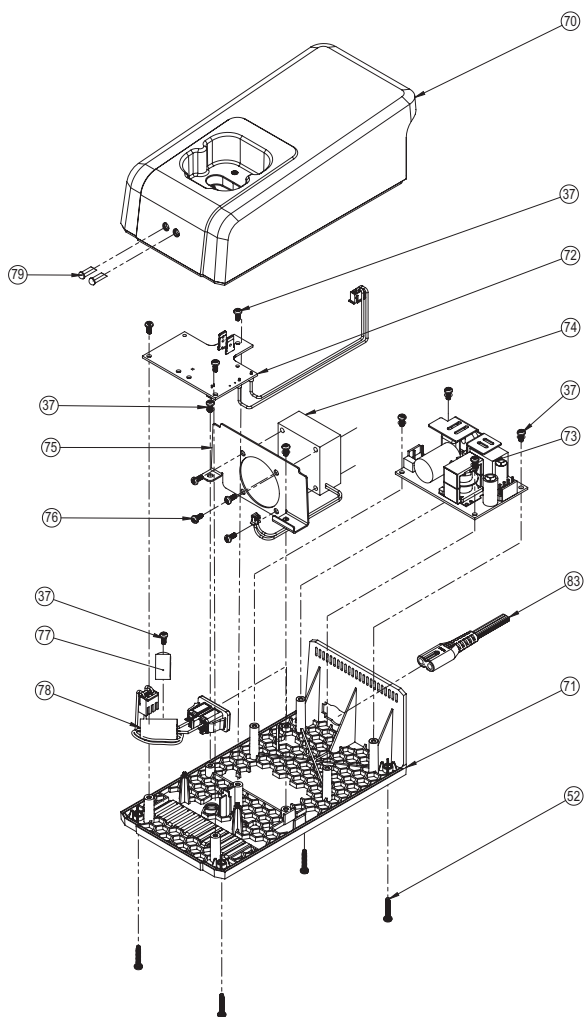


NOTE!

For disposal, take the shearing machine and charging station to a service centre or nearby specialist electrical workshop.

Remove the battery from the device before disposal.





Warranty

Item

Serial number

Date of purchase

Stamp and signature

In case of claim, please return your machine with the instruction manual and the warranty card directly to your local distributor. Please do not cut off the warranty card from the instruction manual.

© 2024 Heiniger AG. All rights reserved.

This instruction manual may not be duplicated or distributed, neither completely nor in extracts, or by electronic or mechanical means (including photocopying), transmitted or used for the purpose of competition without authorisation from Heiniger AG.

Subject to change without notice.

Contact:

Heiniger AG

Industrieweg 8

CH - 3360 Herzogenbuchsee

Switzerland

Translation of the original instructions

Tel. +41 (0)62 956 92 00
marketing(at)heiniger.com

